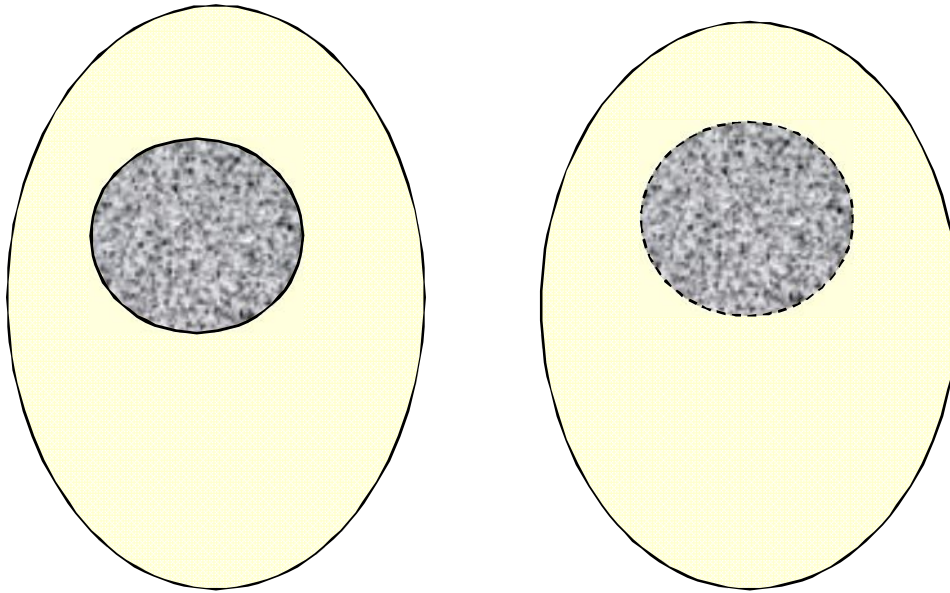


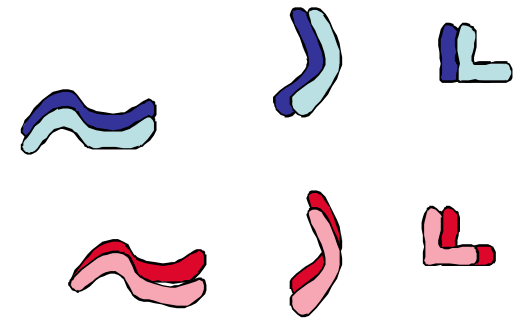
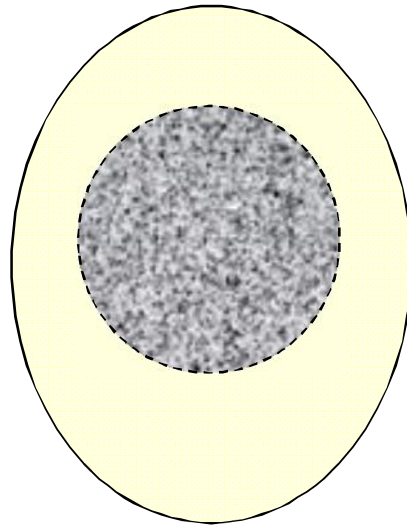
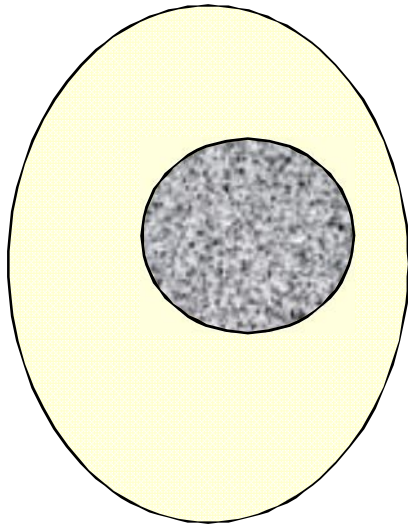
MEIOSE AU COURS D'UNE GAMETOGENESE (exemple où $2n = 6$)

Prophase



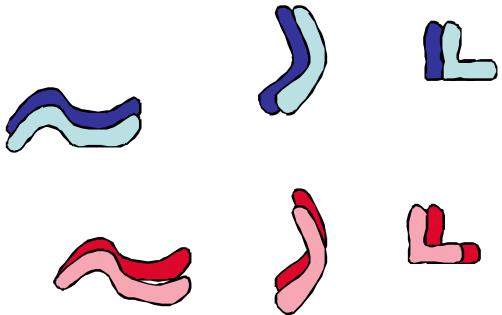
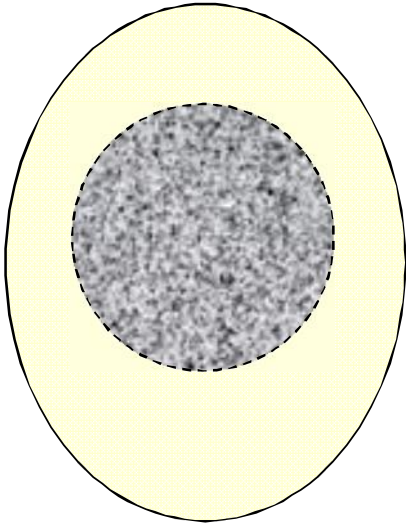
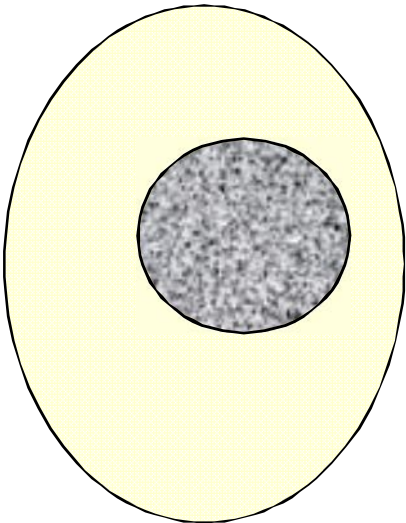
MEIOSE AU COURS D'UNE GAMETOGENESE (exemple où $2n = 6$)

Prophase



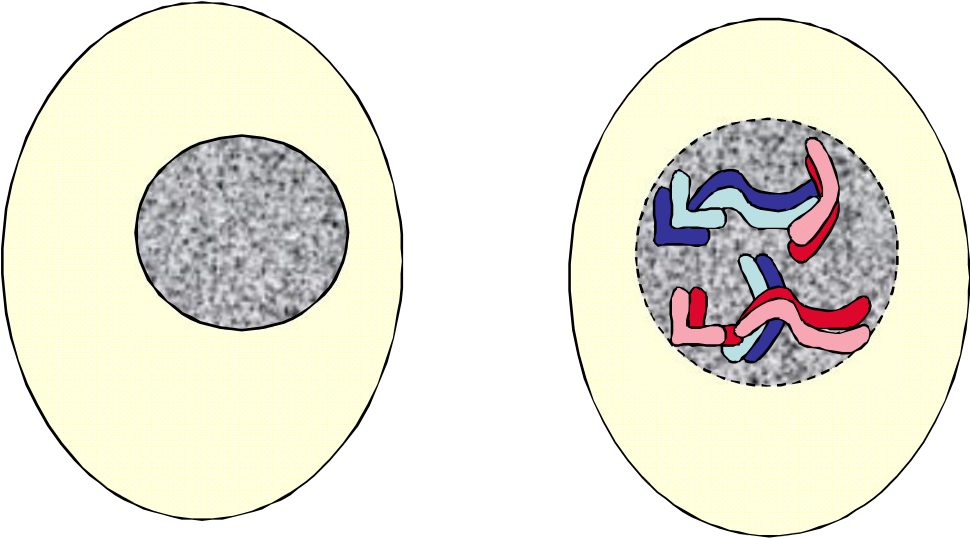
MEIOSE AU COURS D'UNE GAMETOGENESE (exemple où $2n = 6$)

Prophase



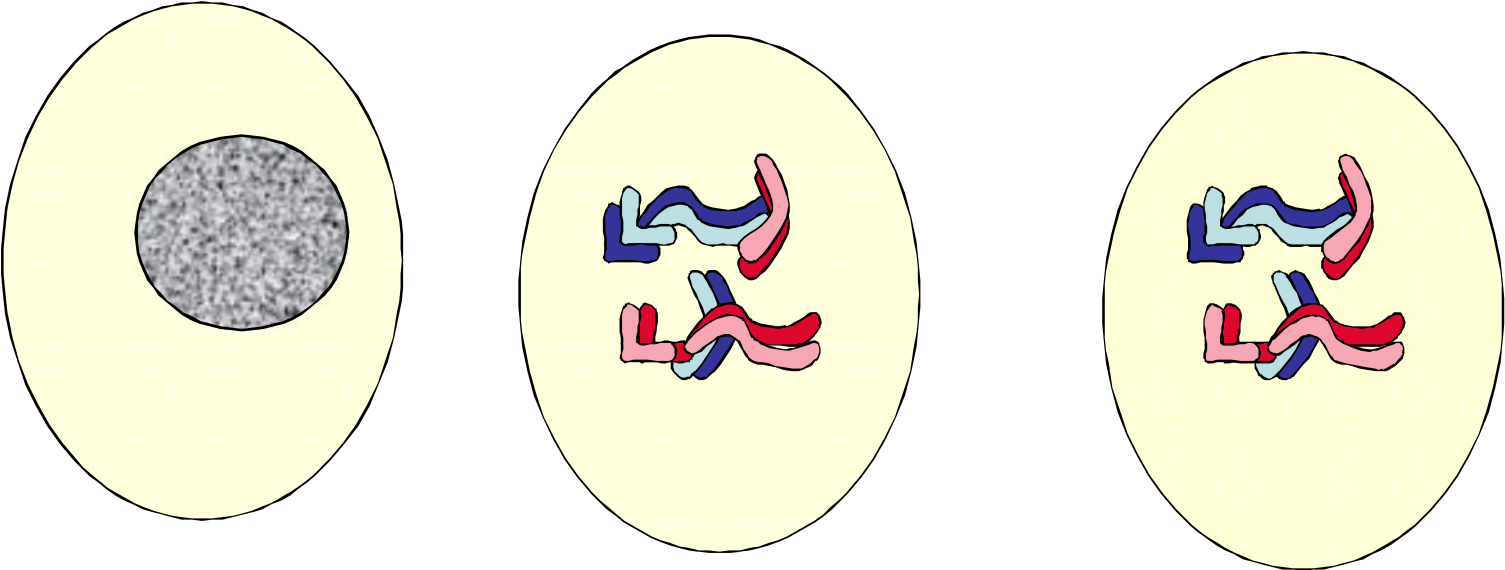
MEIOSE AU COURS D'UNE GAMETOGENESE (exemple où $2n = 6$)

Prophase



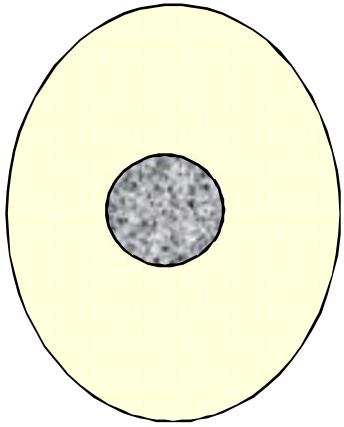
MEIOSE AU COURS D'UNE GAMETOGENESE (exemple où $2n = 6$)

Prophase

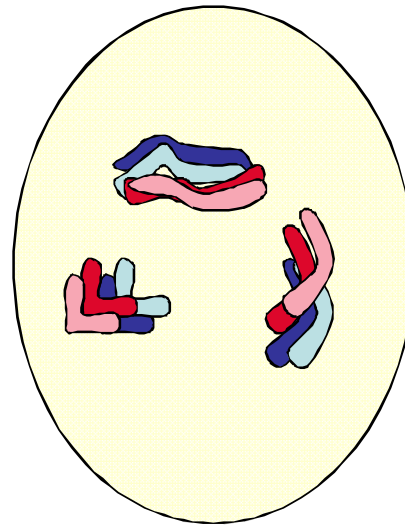
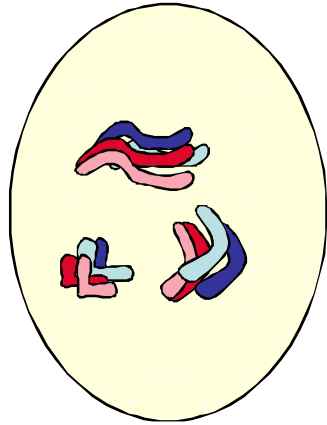


MEIOSE AU COURS D'UNE GAMETOGENESE (exemple où $2n = 6$)

Prophase



Métaphase

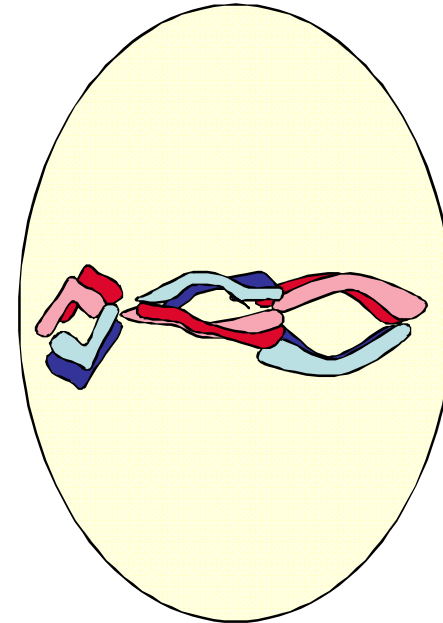
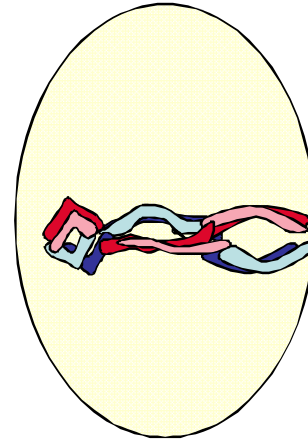
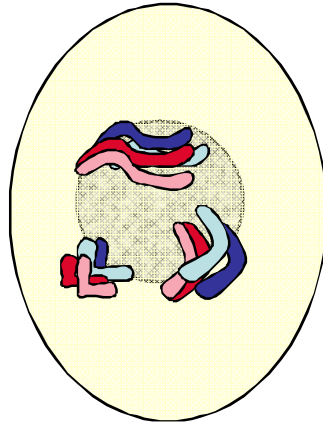
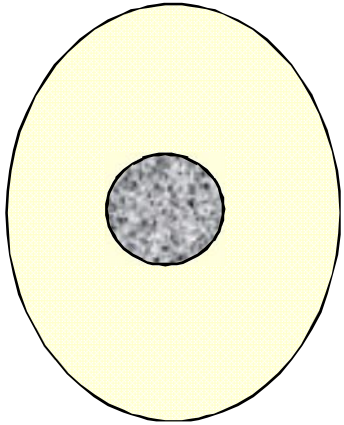


MEIOSE AU COURS D'UNE GAMETOGENESE (exemple où $2n = 6$)

Prophase

Métaphase

Anaphase



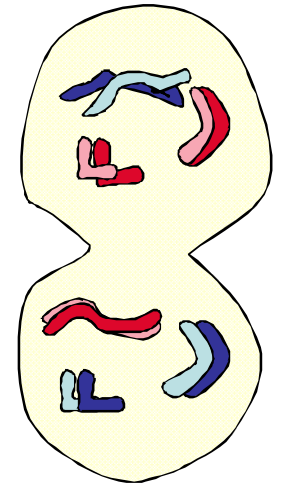
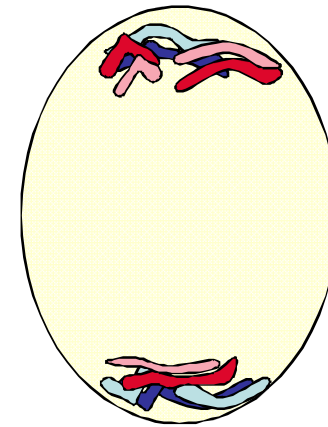
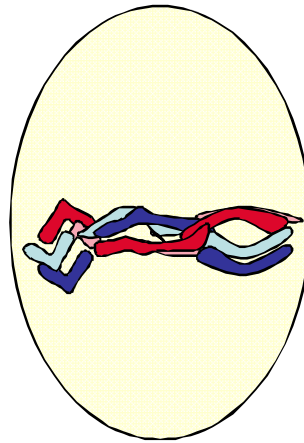
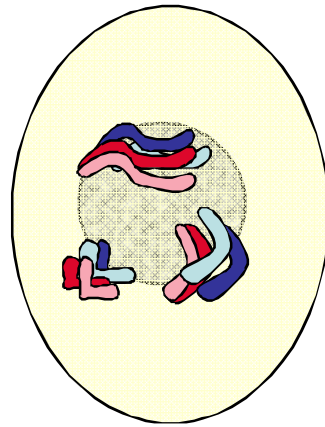
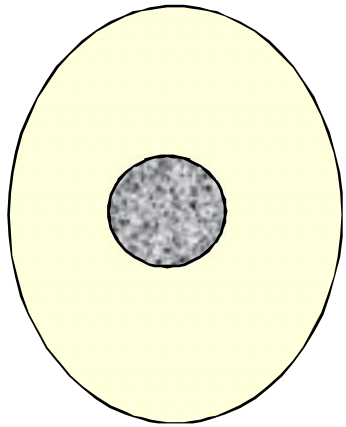
MEIOSE AU COURS D'UNE GAMETOGENESE (exemple où $2n = 6$)

Prophase

Métaphase

Anaphase

Télophase



Première division : **la division réductionnelle**

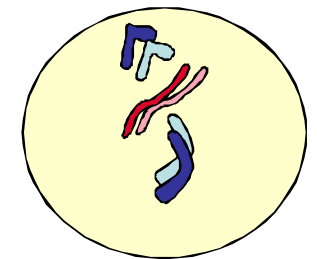
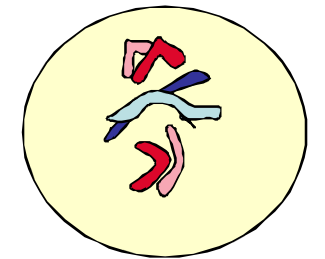
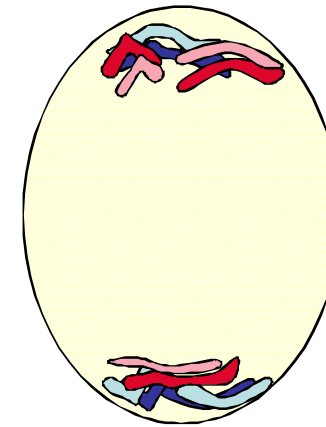
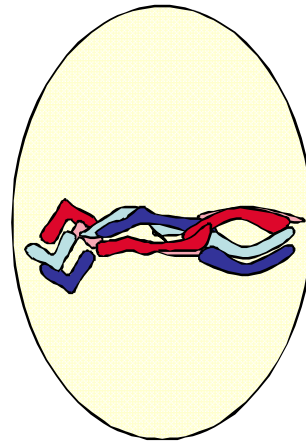
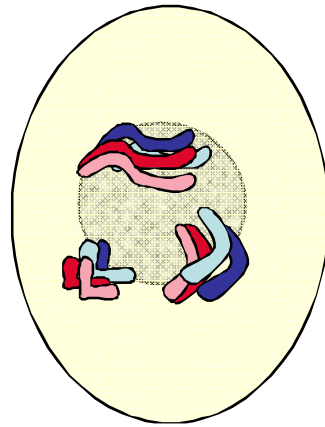
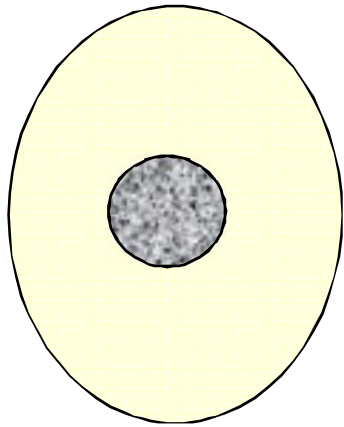
MEIOSE AU COURS D'UNE GAMETOGENESE (exemple où $2n = 6$)

Prophase

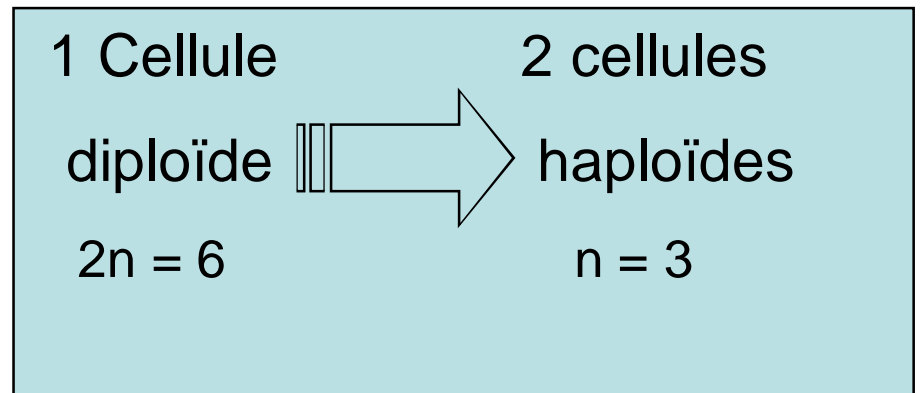
Métaphase

Anaphase

Télophase



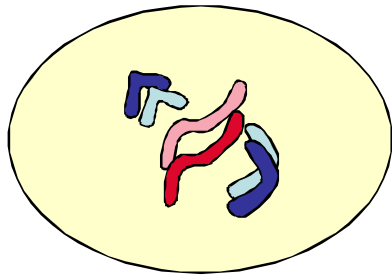
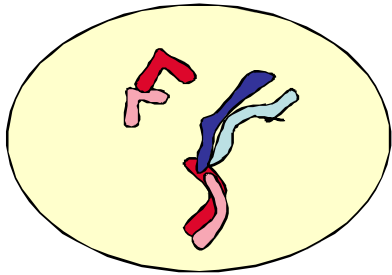
Première division : **la division réductionnelle**



MEIOSE AU COURS D'UNE GAMETOGENESE (exemple où $2n = 6$)

Deuxième division : **la division équationnelle**

Prophase

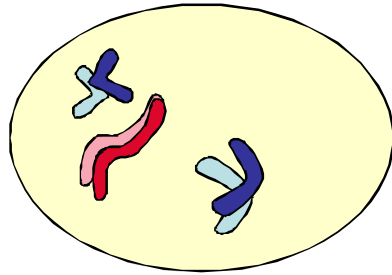
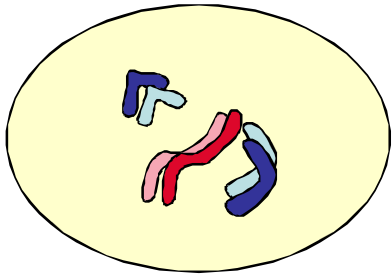
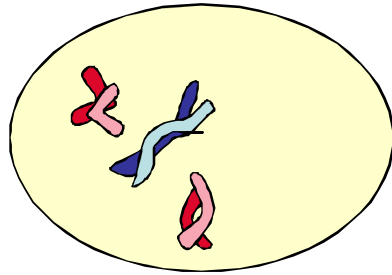
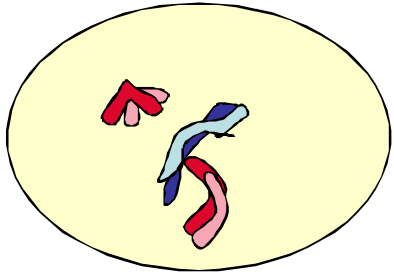


MEIOSE AU COURS D'UNE GAMETOGENESE (exemple où $2n = 6$)

Deuxième division : **la division équationnelle**

Prophase

Métaphase



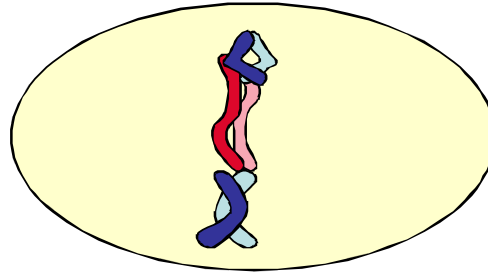
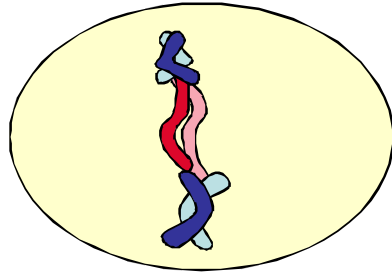
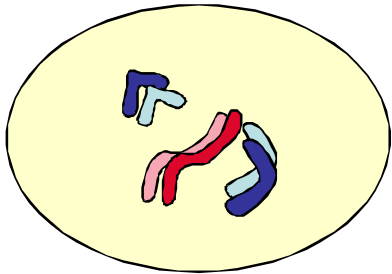
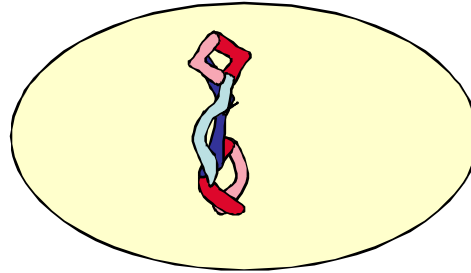
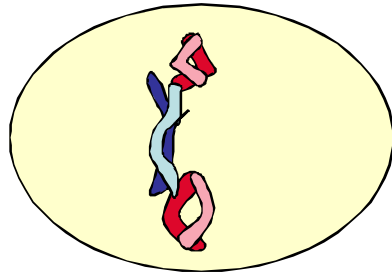
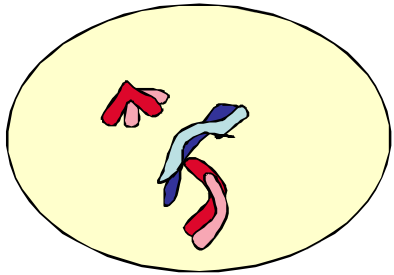
MEIOSE AU COURS D'UNE GAMETOGENESE (exemple où $2n = 6$)

Deuxième division : **la division équationnelle**

Prophase

Métaphase

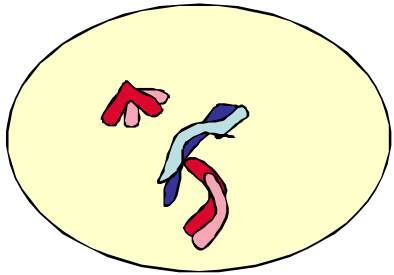
Anaphase



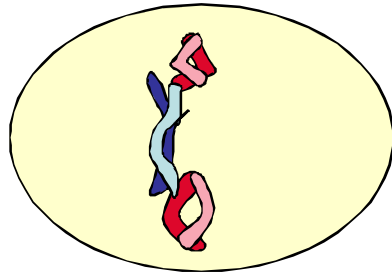
MEIOSE AU COURS D'UNE GAMETOGENESE (exemple où $2n = 6$)

Deuxième division : **la division équationnelle**

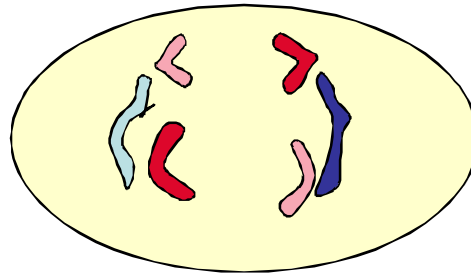
Prophase



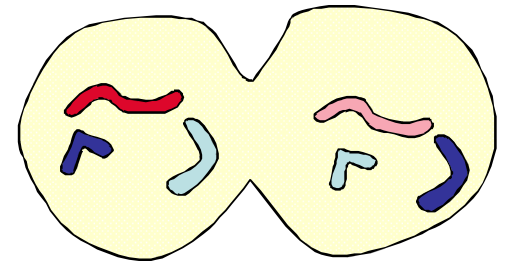
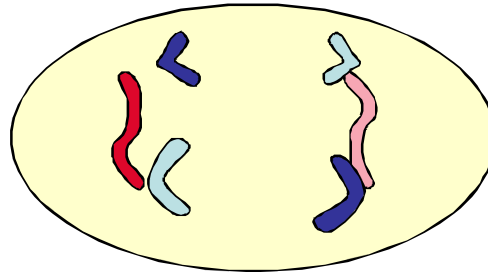
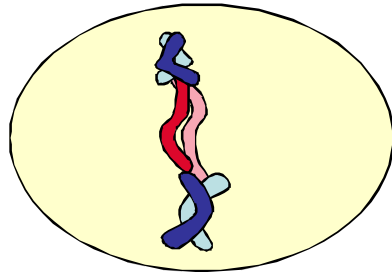
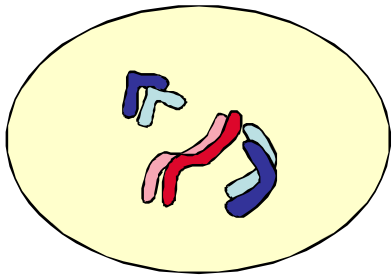
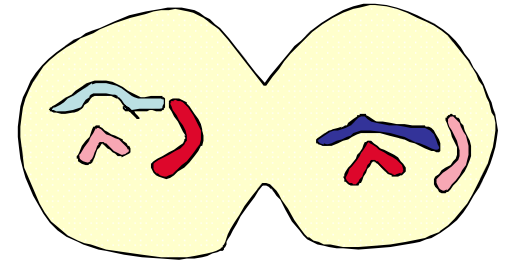
Métaphase



Anaphase



Télophase



MEIOSE AU COURS D'UNE GAMETOGENESE (exemple où $2n = 6$)

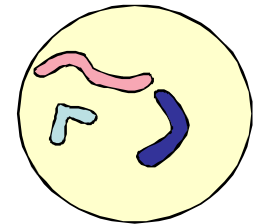
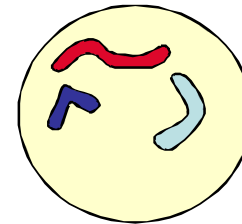
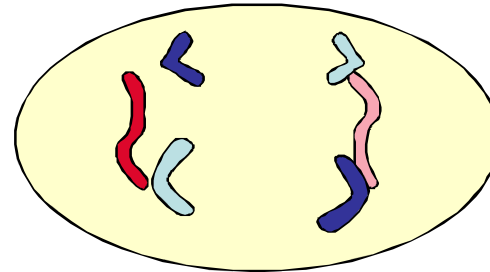
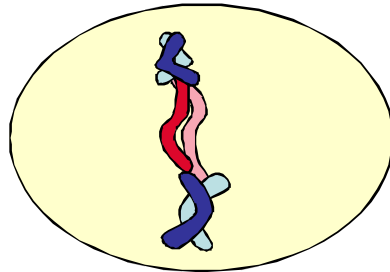
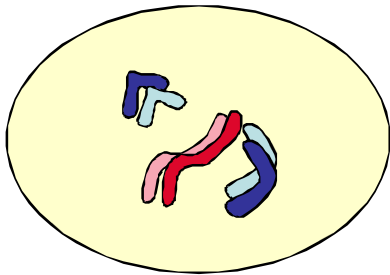
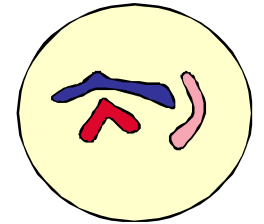
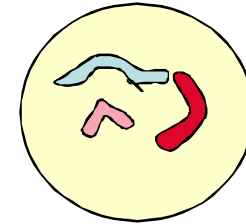
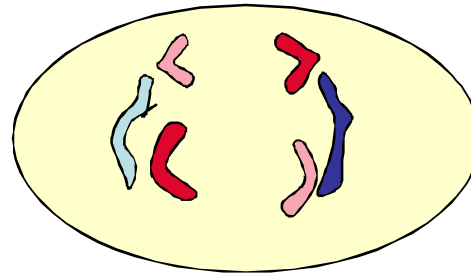
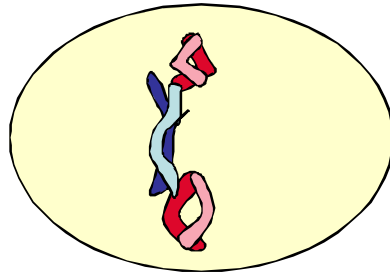
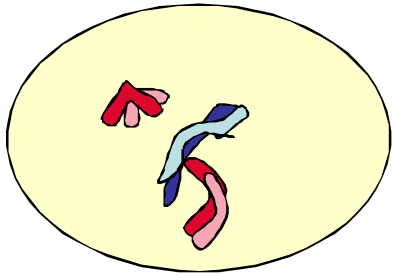
Deuxième division : **la division équationnelle**

Prophase

Métaphase

Anaphase

Télophase



2 Cellules

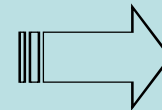
4 cellules

haploïdes

haploïdes

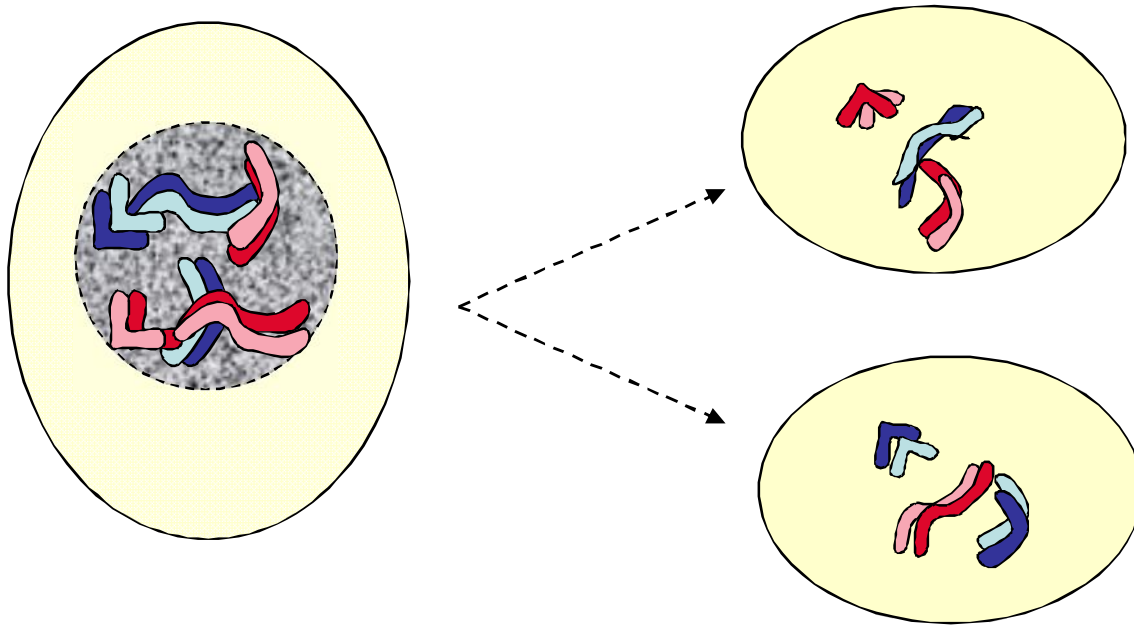
$n = 3$

$n = 3$



BILAN DE LA MEIOSE (exemple où $2n = 6$)

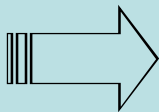
Première division : la
division réductionnelle



1 Cellule

diploïde

$2n = 6$



2 cellules

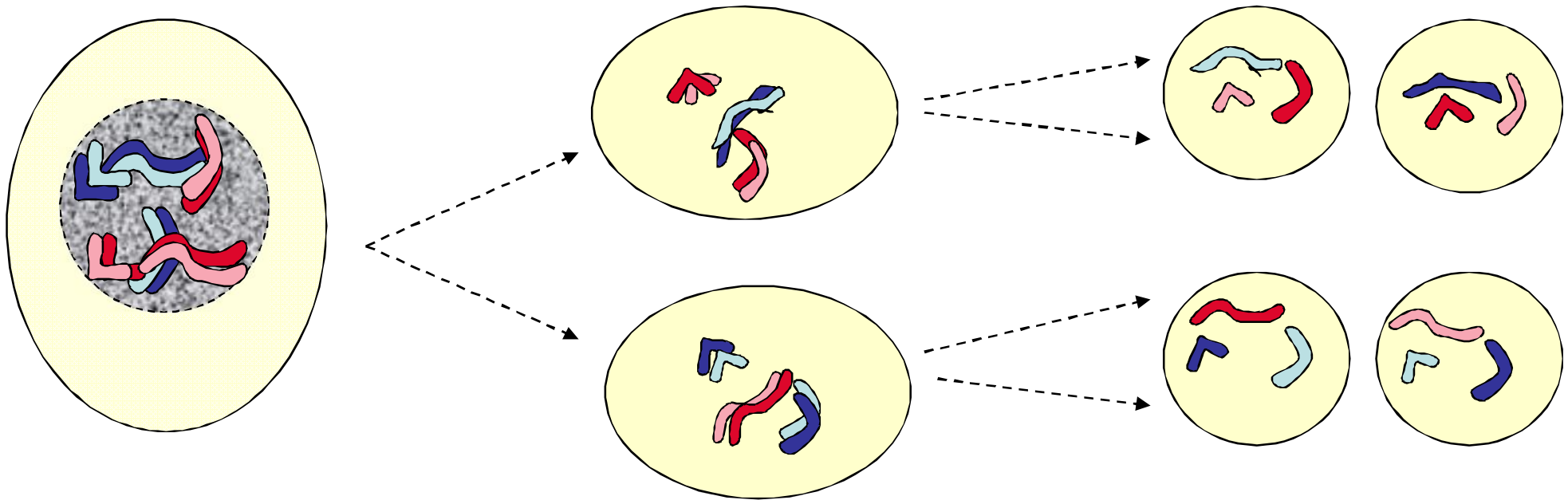
haploïdes

$n = 3$

BILAN DE LA MEIOSE (exemple où $2n = 6$)

Première division : la division réductionnelle

Deuxième division : la division équationnelle



1 Cellule

2 cellules

diploïde

haploïdes

$2n = 6$

$n = 3$

2 Cellules

4 cellules

haploïdes

haploïdes

$n = 3$

$n = 3$